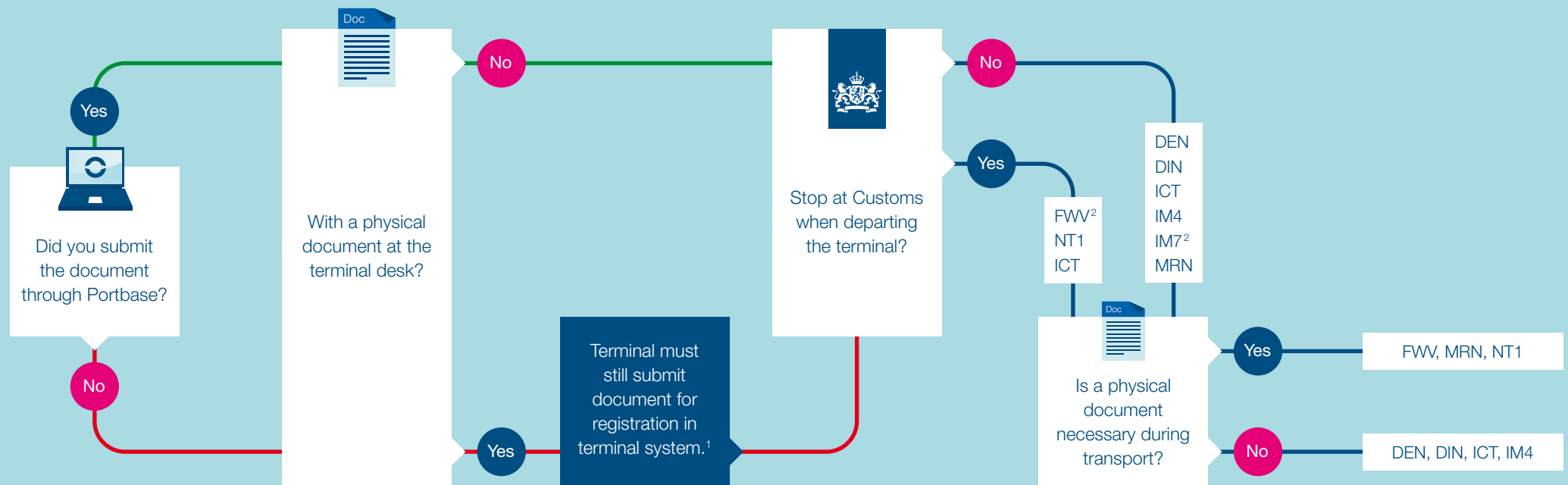




- Barge Center Waalhaven (BCW)
- ECT Delta Terminal
- Euromax Terminal



See reverse for explanation of FWV, NT1 and IM7 documents.

¹ Only available for a fee at ECT Terminals (www.ect.nl).

² FWV and IM7 are not eligible for pre-notification at BCW.

Explanation of documents and handling for each terminal

FWV The following documents are subject to Customs release (FWV):

- Import declaration selected for physical inspection
- Inspection by NWWA: veterinary & high-risk food products
- Veterinary T/S products
- Empty emballage equipment / carriers convenience
- Postal shipments
- Emergency AGS procedure
- ATA carnet
- TIR Carnet
- Military shipments / Army document
- Container with residue
- Request to turn over documents
- Transit declaration selected for physical inspection (T1)
- Community goods (T2L)
- Emergency procedure (NCTS)
- IM7 with article 512

NT1 Customs transport with Transit document; normal procedure (IE28)

For NT1 the handling is as follows:

Customs will print the transport document (IE29) according to the known current procedure. The haulier must then stop at the terminal desk to gain admittance to the terminal.

IM7 Depot document; if another Customs document for transport purposes or article 512 will follow, you must then pre-notify under Customs release (FWV).