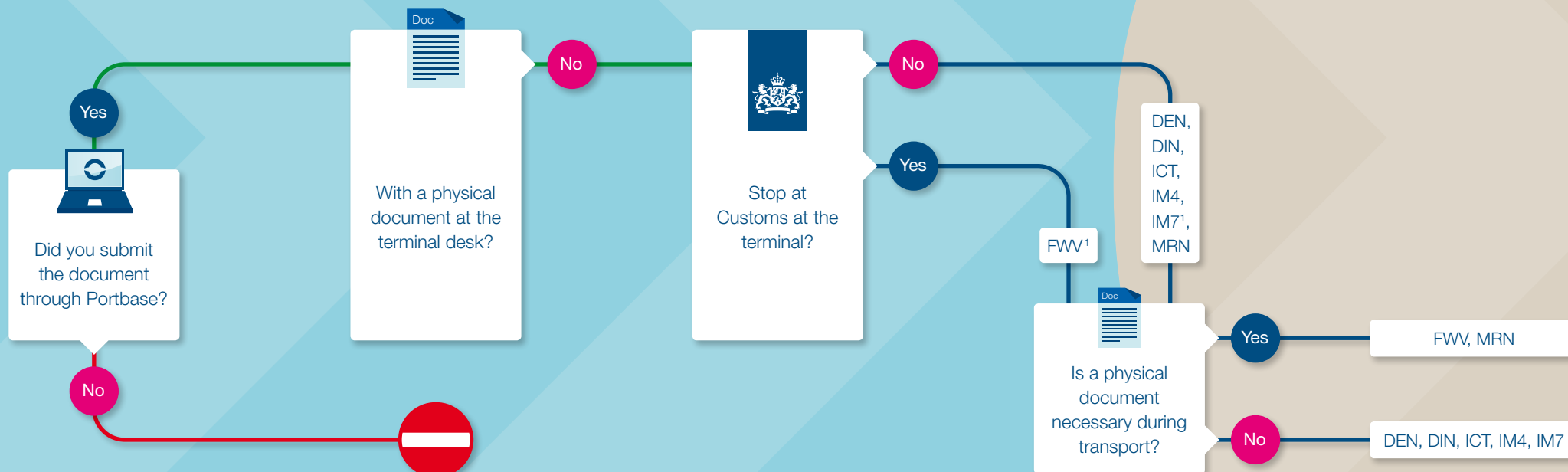


IMPORT



- APM Terminals Maasvlakte II (APMT MVII)
- APM Terminals Rotterdam (APMTR)
- Rotterdam World Gateway (RWG)



¹ See reverse for further explanation of the FVW and IM7 documents.
Use of NT1 is not possible at APMT MVII, APMTR and RWG.

Document flows APMT MVII, APMTR, RWG

16 Notification Import Documentation

DEN	Placement arranged in local clearance bonded warehouse	IM7	Depot document
DIN	Placement arranged in local clearance entry	FVW	Customs release
ICT	Intra-community transaction	MRN	Transit declaration following simplified procedure
IM4	Entry into free circulation with approval for release	NT1	Transit declaration following normal procedure

Explanation of documents and handling for each terminal

FWV The following documents are subject to Customs release (FWV):

- Import declaration selected for physical inspection
- Inspection by NVWA: veterinary & high-risk food products
- Veterinary T/S products
- Empty emballage equipment / carriers convenience
- Postal shipments
- Emergency procedure AGS (NPAGS)
- ATA carnet
- TIR Carnet
- Military shipments / Army document
- Container with residue
- Request to turn over documents
- Transit declaration selected for physical inspection (T1)
- Community goods (T2L)
- Emergency procedure (NCTS)
- IM7 with article 512

IM7 Depot document; followed by another Customs document for transport purposes or article 512, you must then pre-notify under Customs release (FWV).