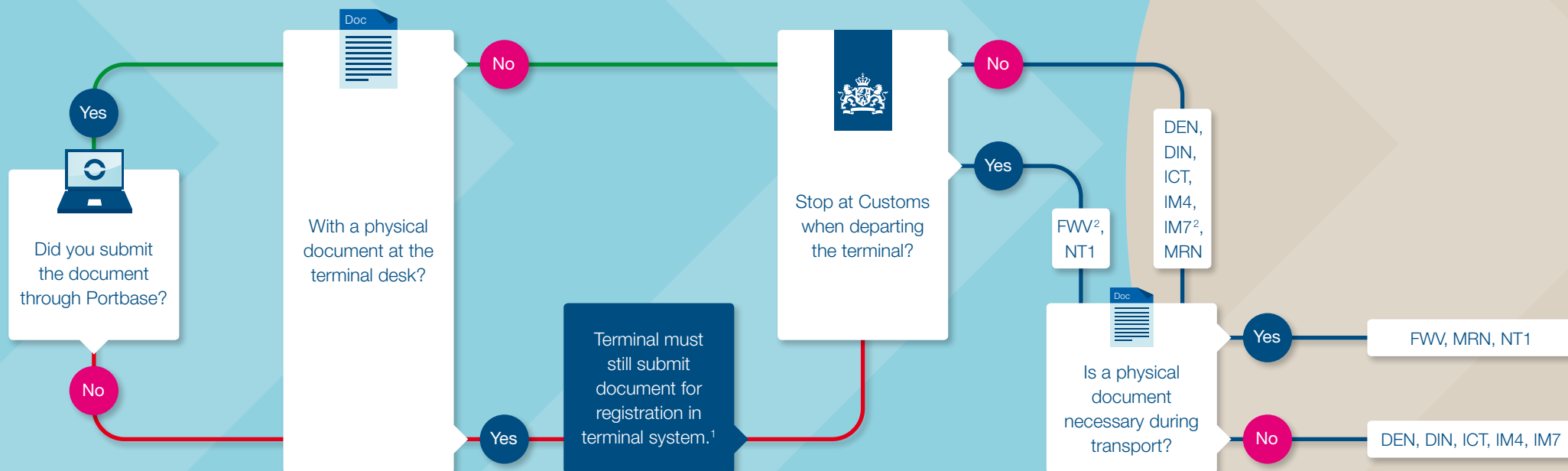


IMPORT



- Barge Center Waalhaven (BCW)
- ECT Delta Terminal
- Euromax Terminal
- Uniport Multipurpose Terminals



See reverse for explanation of FVW, NT1 and IM7 documents.

¹ Only available for a fee at ECT Terminals (www.ect.nl).

² FVW and IM7 are not eligible for pre-notification at BCW.

Document flows at BCW, ECT Delta, Euromax and Uniport

16 Notification Import Documentation

DEN Placement arranged in local clearance bonded warehouse
DIN Placement arranged in local clearance entry
ICT Intra-community transaction
IM4 Entry into free circulation with approval for release

IM7 Depot document
FVW Customs release
MRN Transit declaration following simplified procedure
NT1 Transit declaration following normal procedure

Explanation of documents and handling

FWV The following documents are subject to Customs release (FWV):

- Import declaration selected for physical inspection
- Inspection by NVWA: veterinary & high-risk food products
- Veterinary T/S products
- Empty emballage equipment / carriers convenience
- Postal shipments
- Emergency AGS procedure
- ATA carnet
- TIR Carnet
- Military shipments / Army document
- Container with residue
- Request to turn over documents
- Transit declaration selected for physical inspection (T1)
- Community goods (T2L)
- Emergency procedure (NCTS)
- IM7 with article 512

NT1 Customs transport with Transit document; normal procedure (IE28)

For NT1 the handling is as follows:

Customs will print the transport document (IE29) according to the known current procedure. The haulier must then stop at the terminal desk to gain admittance to the terminal.

IM7 Depot document; if another Customs document for transport purposes or article 512 will follow, you must then pre-notify under Customs release (FWV).