



# Portbase Brexit Service Selector

be smart.  
get connected.  
portbase®

## Brexit in sight

The United Kingdom is set to withdraw from the European Union on 29 March 2019. When it does, the Brexit will be a reality. When the United Kingdom leaves the European Union, that act will create Customs obligations for the business community in the form of declarations and inspections of the flow of goods.

The introduction of Customs formalities will yield mutual responsibility and dependence within the chain. Incoming and outgoing cargoes will be subject to Customs inspections and cannot be picked up for further transport unless:

- summary and detailed declarations have been submitted;
- the cargo has stopped at Customs at the point of entry and exit (the port);
- Customs has had an opportunity to inspect the cargo if desired.

The individual links in the chain will need to share information with one another in order to comply with their respective Customs formalities and to prevent any unnecessary logistical delays.

## Portbase Brexit Service Selector

The Portbase services support port authorities and businesses by making it possible to exchange information easily and efficiently. To line up all the benefits:

- greater efficiency;
- reduced costs;
- better service;
- more accurate planning;
- faster processing times;
- fewer mistakes;
- optimum reuse of data;
- available 24 hours a day, 7 days a week.

The Portbase Brexit Service Selector can show you at a glance which Portbase services will be most valuable for your company in connection with the Brexit. In addition to these services, Portbase offers other solutions that can be advantageous to you as well.

Visit [www.portbase.com/services](http://www.portbase.com/services) to learn about the additional services we offer.

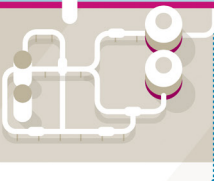
# IMPORT



4  
14

7  
16

21



22 25 42



Vessel Call

Import Cargo Management

Organization of Hinterland Transport

Vessel Call

Export Cargo Management

Organization of Hinterland Transport

32

29

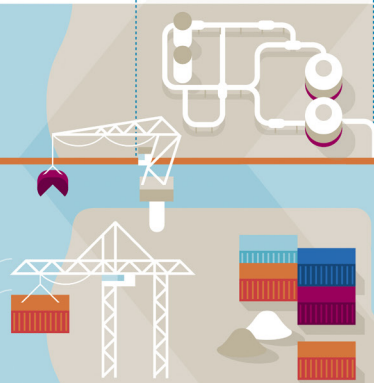
33

36

31



# EXPORT



## Vessel Call

## Import Cargo Management

## Organization of Hinterland Transport

## Export Cargo Management

- 4 Vessel Notification

- 7 Customs Scan Process
- 14 Cargo Declaration Import
- 16 Notification Import Documentation
- 21 Pre-arrival Cargo Declaration Import (4h)

- 22 Barge Planning
- 25 Rail Planning
- 42 Hinterland Container Notification - Road

- 29 Notification Arrival Export Containers
- 31 Notification Export Documentation
- 32 Cargo Declaration Export Containers
- 33 Exit Summary Declaration
- 36 Clearance NCTS Export Containers

Agents, shipping companies and shipbrokers in the bulk and container sector can speed up the logistic processes around vessel visits by using the Portbase services.

This improves the logistic process because authorities - such as Customs and Harbour master - and port authorities are informed in good time about the arrival of a ship, the cargo and the country of origin. There is also increased coordination between all the parties involved. As a result, activities can be scheduled well in advance and potential risks evaluated ahead of time. Any inspections can be scheduled before the ship actually enters the port. This further reduces the time needed to process each vessel.

Agents, shipping companies, shipbrokers, importers and forwarders are required to notify various authorities of the cargo they want to import to the European Union. This applies to both bulk and container transport. The Portbase services make it easy to comply with these requirements.

Stakeholders such as Customs, the Netherlands Food and Consumer Product Safety Authority (NVWA) and seaport terminals are provided with the data they require, efficiently and transparently. This timely information makes a smooth flow of goods possible. Within the Portbase services, the reuse of information enables a further simplification of logistics processes.

The port serves as a gateway to and from the hinterland. Road, inland navigation and rail hauliers use the Portbase services to quickly and efficiently deliver and collect containers at the sea terminals.

For cargo that needs to be moved to and from the port, the Portbase services provide a user-friendly means of exchanging information. Thanks to those services, terminals are informed well ahead of time and all the required information is known. As a result, logistical processes proceed without a hitch.

Portbase offers forwarders, exporters, agents, shipbrokers and shipping companies a one-stop-shop solution for handling export formalities.

The Portbase services improve the flow for both bulk and container transport. They provide optimum information for all parties involved, including the terminals and Customs, and make it easy for all requirements to be met. Optimum and efficient logistics from A to Z.

## Portbase-services from A to Z



### Barge Planning

22

Service for pre-notifying barges (lighter agreements) and container cargo (discharge/loading lists) at terminals, including status feedback from the terminal.

### Cargo Declaration Export Bulk/Containers

32

Service for submitting your summary declarations for cargo loaded in the container sector, general cargo and bulk sector.

### Cargo Declaration Import

14

Service for submitting summary declarations to be discharged (SAL) to Customs.

### Clearance NCTS Export Containers

36

By using this service, container terminals can easily release NCTS documents for outgoing cargo (T1 and T2) electronically at Customs.

### Customs Scan Proces

7

Service for optimum logistics around customs inspections. Containers are able to quickly re-enter the logistic chain.

### Exit Summary Declaration

33

Service to submit an Exit Summary Declaration (EXS) for outgoing cargo for which the safety and security data are not (or no longer) available to Customs in any other way.

### Hinterland Container Notification - Road

42

A single service for pre-notifying containers for all hinterland modalities (truck, rail, barge) to sea terminals, inland terminals and depots.

### Notification Arrival Export Containers

29

Bulk and general cargo terminals can easily notify Customs that ECS goods have reached the exit location (arrival at exit).

### Notification Export Documentation

31

Service to pre-notify customs document numbers to terminals related to export cargo (both ECS notification and T1/T2 documents).

### Notification Import Documentation

16

Service to pre-notify customs document numbers related to import cargo.

### Pre-arrival Cargo Declaration Import (4h)

21

Makes it easy for deepsea container shipping companies to submit an Entry Summary Declaration (ENS) to Customs.

### Rail Planning


25


Pre-notify train compositions (bulk and containers) and cargo (discharge/loading lists of containers) to terminals, including status feedback from terminals.

### Vessel Notification

4

Service to submit the vessel notification to the Harbour Master and Customs.

 Available by Web Interface

 Available by System Interface

## Classification of Portbase services according to target group and market sector

Service	Target group					
	Barge operators	Forwarders	Rail infrastructure operator /-operators/-hauliers	Road hauliers	Shipbrokers/Shipping companies	Terminals
Barge Planning	C					C
Cargo Declaration Export Containers					C	
Cargo Declaration Import					A	
Clearance NCTS Export Containers						C
Customs Scan Proces					C	C
Exit Summary Declaration					A	
Hinterland Container Notification - Road	C		C			C
Notification Arrival Export Containers						C
Notification Export Documentation		C				
Notification Import Documentation	C	C	C	C	C	C*
Pre-arrival Cargo Declaration Import (4h)					A	
Rail Planning			A			A
Vessel Notification					A	

A Comprises all segments  
 B Comprises dry and liquid bulk  
 C Comprises containers  
 \* As buyer

## More information

For more information or specific questions about Portbase services, you can always send an e-mail to: [sales@portbase.com](mailto:sales@portbase.com) or phone: +31 (0)88 625 25 34.

be smart.  
 get connected.  
**portbase**<sup>®</sup>

Blaak 16  
 3011 TA Rotterdam  
 The Netherlands  
 +31 (0)88 625 25 34  
[info@portbase.com](mailto:info@portbase.com)

[portbase.com](http://portbase.com)